

## Sanborn County 4-H Building Addition Project

Plans are underway to **expand the 4-H building** so that we can better accommodate our activities including the 4-H shooting sports program that meets on Sunday afternoons and Tuesday nights from January-April, our annual Achievement Days, and many other 4-H and community activities. Sanborn County has a very active 4-H program and we have outgrown the current 4-H Building.

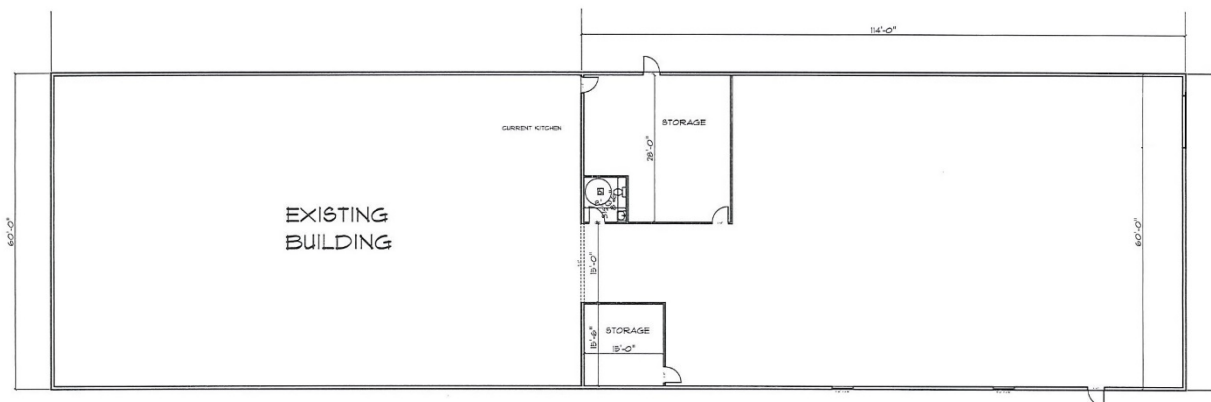
4-H Members in 2004 = 30 \*\* Today = 160+  
4-H Shooting Sports in 2008 = 15 \*\* Today = 90

The Sanborn County 4-H Building in Forestburg has served the area well for many years, supporting 4-H as well as many community events. We are in exciting times as both growth in 4-H and needs from the school and community are demanding more space for activities. The Sanborn County 4-H program has grown from about 30 members in 2004 to 160 members today. Of that total, we have 90 4-H members in the Shooting Sports program, an increase from 15 in 2008. Shooting Sports offers practice every week on Sunday and Tuesday from January to April, and this activity pushes the building capacity to its seams. As we have explored ways to support and expand our annual Achievement Days and other 4-H activities, we also find the need for more space.

The building is used for community and school activities throughout the year including meetings and workshops, graduation receptions, showers, family reunions and get-togethers, funerals and the Forestburg alumni reunion. As we have visited with Sanborn Central and Woonsocket Schools, we find that there is a need for additional building space for school plays, FFA activities, marching band practice, cheerleading practice, and much more that could take pressure off the school gym and support various activities. We see potential for the building to be used for larger social events with increased space.

**Groundbreaking is planned for May 2023.**

The drawing is a rough draft but is intended to show that the current building is 60' x 100'. The addition will also be 60' x 100' and will provide mostly open space along with a family/handicap-accessible restroom and off - kitchen storage. The addition will be constructed on the north end of the current building.



Current 4-H Building during Shooting Sports season showing BB gun line with 11 lanes.



A major step in this process is of course fundraising! Total goal is \$350,000. The Sanborn County Commissioners have committed \$100,000 to this project and with this, to date we have raised/have commitments for \$295,000+ of this amount. We intend to raise the remainder through donations, fundraising and grants. This brochure will provide a rough draft of the planned addition, donor level opportunities and information on the need for the addition. <http://www.sanborncounty4h.com/doc/4-HBuildingProjectDonorBrochure.pdf>

You may contact any of the Building Committee members for more information: Scott Senska 605.350.1657, Art & Audrey Kneen 605.495.4321, Andy Ettswold 605.770.0794, Riley Zoss 605.630.8895, Rod Weber 605.350.5374, Myron Sonne 605.933.0393 and Paula Linke 605.350.2813. We invite you to join us as we grow into the future by being a donor for the Sanborn County 4-H Building Addition project.

Sponsorship levels are as follows:

#### **Naming Rights:**

The naming rights donor levels include both areas inside the 4-Building as well as areas on the 4-H grounds. We decided to offer various options on the 4-H grounds to include past improvement projects.

BB Gun Shooting Range - \$10,000 - *committed* - **"Bus' BB Gun Range" (Ettswold Family)**

Air Guns Shooting Range - \$10,000 - *committed*

Kitchen/Concession Stand - \$10,000 - *committed* - **"Sutton's Snack Shack" (Senska Family)**

Horse Arena - \$10,000 – *committed* – **CorTrust Bank**

4-H Barn Show Ring - \$15,000 - *committed* - **Farm Credit Services of America**

\*\*\*\*\*

#### **General Donor levels with Plaque Recognition on Wall:**

**Platinum - \$5,000+, Gold - \$2,500 - \$4,999, Silver - \$1,000 - \$2,499, Bronze - \$500 - \$999**

**2x4 Signage in Building Addition** - \$500 annually or \$1000 for 3 years and pay for cost of sign

\*\*\*\*\*

#### **Send your donation to:**

Sanborn County 4-H, c/o Velma Kneen, Treasurer, 22274 406th Ave, Forestburg SD 57314

Name: \_\_\_\_\_

Address: \_\_\_\_\_

City: \_\_\_\_\_

Phone: \_\_\_\_\_

Email: \_\_\_\_\_

Amount: \_\_\_\_\_ Sponsorship Level: \_\_\_\_\_

Name or Business as you wish to be recognized: \_\_\_\_\_